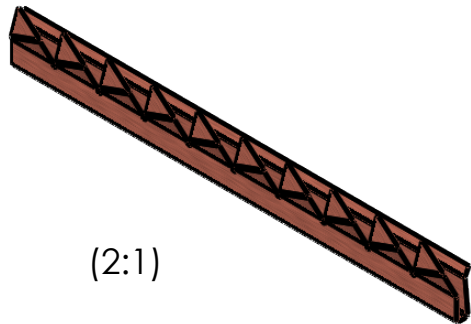
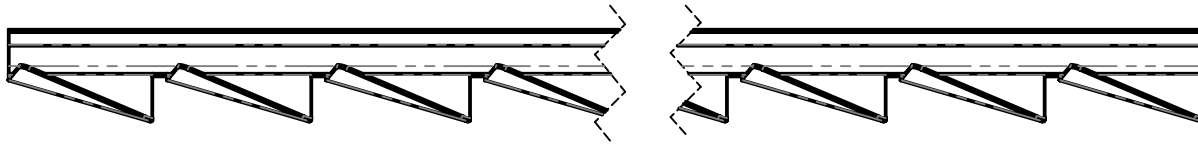


1



(2:1)

drawing for customer information

1

Stripes can be cut off after each finger on request.  
 Calculation of length in mm:  
 strip length = number of fingers x 1 pitch - 1 slot

|   |  |   |   |  |  |                     |
|---|--|---|---|--|--|---------------------|
| <b>FEUERHERDT</b><br>EMI Shielding Products<br>Specialist for Contact Springs |  | tolerances:<br>X,X ± 0,5<br>X,XX ± 0,2<br>X,XXX ± 0,1 | length tolerance:<br>100-300 ± 0,5<br>300-400 ± 0,8<br>400-500 ± 1<br>> 500 ± 1,5 | dimensions in mm<br>unmeasured contours according to 3D data | scale: <b>5:1</b>  | revision: <b>00</b> |
|   |  |   |   | date: 09.06.20<br>name: <b>Gutmann</b>                       | material: <b>rawmaterial: CuBe 2, 1/2H</b><br><b>finalstate: CuBe 2, 1/2HT</b> |                     |
|   |  |   |   | checked: 15.06.20<br>name: <b>Pröhl</b>                      | description:<br><h1 style="text-align: center;">type X3</h1>                   |                     |
|   |  |   |   | released:  | drawing number:<br><h1 style="text-align: center;">TC.007.10.C</h1>            |                     |
|   |  |   |   | surface code:<br>bright finish -02<br>gold -03<br>silver -04 | sheet: <b>A4</b>   |                     |
|   |  |   |   | thickness: t= 0,08   | replacement drawing:   |                     |