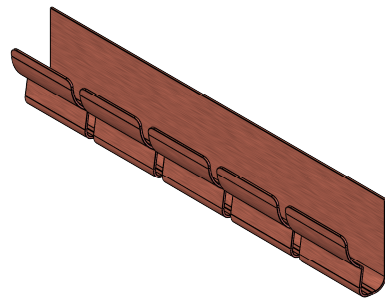


drawing for customer information



Stripes can be cut off after each finger on request.
 Calculation of length in mm:
 strip length = number of fingers x 1 pitch - 1 slot

1

| | | | | | | |
|---|-------------|---|---|--|---|--|
| FEUERHERDT EMI Shielding Products Specialist for Contact Springs | | tolerances: X,X ± 0,5 X,XX ± 0,2 X,XXX ± 0,1 | length tolerance: 100-300 ± 0,5 300-400 ± 0,8 400-500 ± 1 > 500 ± 1,5 | dimensions in mm unmeasured contours according to 3D data | scale: 2:1 | revision: 00 |
| | | | | date: created 30.06.20 checked 05.08.20 released | name: Gutmann Pröhl | material: rawmaterial: CuBe 2, 1/2H finalstate: CuBe 2, 1/2HT |
| | | | | description: <h1>type CL1-3</h1> | | |
| | | | | drawing number: <h1>CO.001.20.C</h1> | | sheet: 1 |
| | | | | replacement drawing: | | |
| rev. | description | date | name | thickness: t=0,15 | | |